



HAIL IMPACT REPORT



HAIL IMPACT REPORT | 03/28/2019 - 03/28/2021

Prepared For: 825 W. Irving Blvd., Irving, Texas 75060
32.8139019, -96.95563949999999

This Hail Impact Report uses a network of hundreds of advanced Doppler radars with Dual Polarization technology as well as industry-accepted practices and principles supported by NOAA, the National Weather Service, and the meteorological community. Other companies with hail reports that are based on "proprietary" methodology often fail to detect the presence of hail even when it occurred. Sometimes their reports show large hail occurrence when it did not occur at all.

Our "Hail Impact Reports" provide users with a high level of confidence that the information they are receiving is accurate and can be accepted as authoritative, backed by NOAA research, published papers, accepted methodology and the most advanced network of radar hail detection.

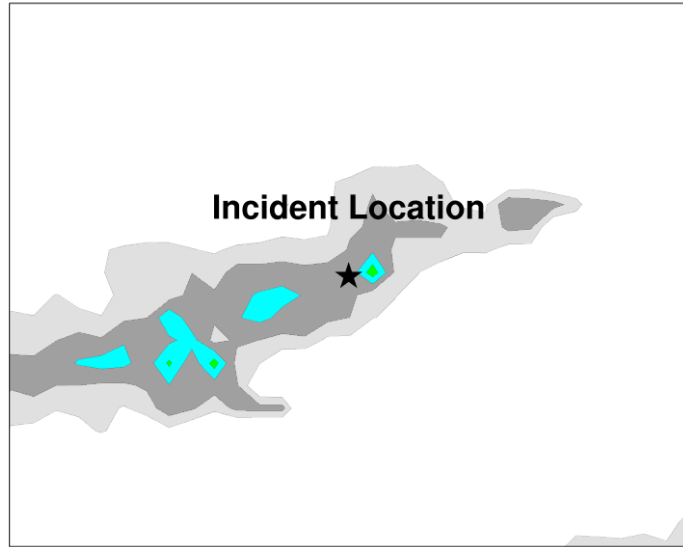
Terms & Conditions

As agreed upon in the "Terms and Conditions" you accepted, this Data and report is unique for this particular address and that such Data and report is inapplicable to any other address or location. Use of this report and Data for any other address or location is expressly prohibited. The Data is provided "as is" and the data and report you received are to be used for informational purposes only. The Company is not responsible for the availability, accuracy or content of the Data sought by you through the websites. Should you need our services for litigation, trial testimony, depositions or other disputes, you understand and agree that the Company will need to prepare a more in-depth, full forensic report which will include additional analysis, details and methodology that are not included in these reports. Receiving and obtaining these online reports and/or maps from the Company does not constitute retention of Forensic Weather Consultants, LLC or its employees or members in any way. By using the websites, you acknowledge and agree that the Company is not responsible or liable for any damage or loss as a result of your reliance on the Data or any content or services provided by third parties. The websites contain copyrighted material and other proprietary information including, but not limited to, text, software, photos, video, graphics, music and sound and the entire contents of the websites are protected by copyright, trademark, and other intellectual property laws of the United States. You may not modify, distribute, publish, transmit, publicly display, publicly perform, participate in the transfer or sale, create derivative works or in any way exploit any part of the websites or the Services, in whole or in part.

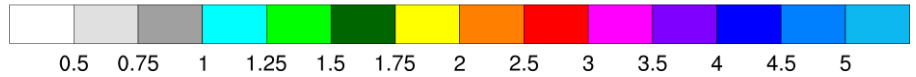
SUN APR 19th
(2020/04/19)
Size: 0.83 inches

MAXIMUM 24-HOUR HAIL SIZE

Date: April-19-2020



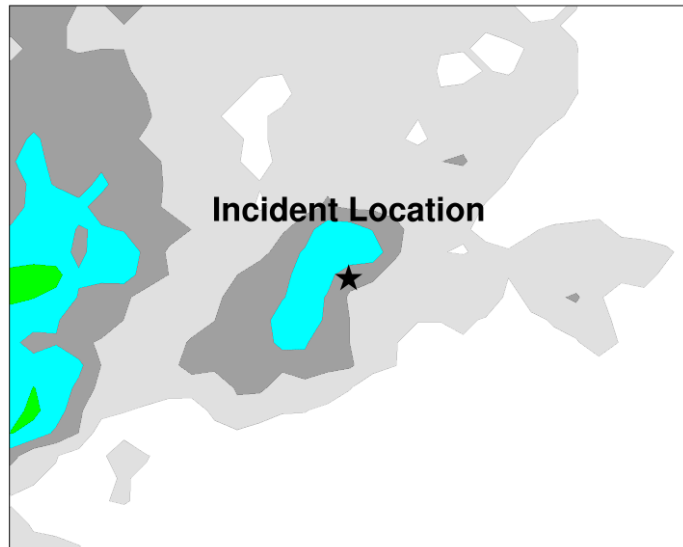
Hail Size (Inches)



SUN JUN 16th
(2019/06/16)
Size: 0.87 inches

MAXIMUM 24-HOUR HAIL SIZE

Date: June-16-2019



Hail Size (Inches)



MAXIMUM 24-HOUR HAIL SIZE

Date: May-18-2019

SAT MAY 18th
(2019/05/18)
Size: 0.59 inches



Hail Size (Inches)

